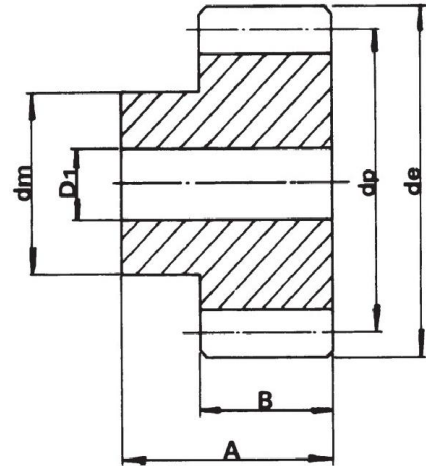


## Spur Gear with Hub

Tooth Width "B" for	Tooth Length "A" for
Module 1 = 15 mm	Module 1 = 25 mm
Module 1.5 = 17 mm	Module 1.5 = 30 mm
Module 2 = 20 mm	Module 2 = 35 mm
Module 2.5 = 25 mm	Module 2.5 = 40 mm
Module 3 = 30 mm	Module 3 = 50 mm
Module 4 = 40 mm	Module 4 = 60 mm
Module 5 = 50 mm	Module 5 = 75 mm
Module 6 = 60 mm	Module 6 = 80 mm



Z	Mod.1				Mod.1.5				Mod.2				Mod.2.5			
	de	dp	dm	D1	de	dp	dm	D1	de	dp	dm	D1	de	dp	dm	D1
12	14	12	9	6	21.0	18.0	14	8	28	24	18	10	35.0	30.0	22	10
13	15	13	10	6	22.5	19.5	15	8	30	26	20	10	37.5	32.5	25	10
14	16	14	11	6	24.0	21.0	17	8	32	28	22	10	40.0	35.0	28	10
15	17	15	12	6	25.5	22.5	18	8	34	30	24	10	42.5	37.5	30	10
16	18	16	13	6	27.0	24.0	19	8	36	32	25	10	45.0	40.0	32	12
17	19	17	14	6	28.5	25.5	20	8	38	34	25	10	47.5	42.5	35	12
18	20	18	15	8	30.0	27.0	20	8	40	36	25	10	50.0	45.0	35	12
19	21	19	15	8	31.5	28.5	20	8	42	38	25	10	52.5	47.5	35	12
20	22	20	16	8	33.0	30.0	25	8	44	40	30	10	55.0	50.0	40	12
21	23	21	16	8	34.5	31.5	25	10	46	42	30	12	57.5	52.5	40	14
22	24	22	16	8	36.0	33.0	25	10	48	44	30	12	60.0	55.0	45	14
23	25	23	18	8	37.5	34.5	25	10	50	46	30	12	62.5	57.5	45	14
24	26	24	20	10	39.0	36.0	25	10	52	48	35	12	65.0	60.0	45	14
25	27	25	20	10	40.5	37.5	25	10	54	50	35	12	67.5	62.5	50	14
26	28	26	20	10	42.0	39.0	30	12	56	52	40	12	70.0	65.0	50	14
27	29	27	20	10	43.5	40.5	30	12	58	54	40	12	72.5	67.5	50	14
28	30	28	20	10	45.0	42.0	30	12	60	56	40	12	75.0	70.0	50	14
29	31	29	20	10	46.5	43.5	30	12	62	58	40	14	77.5	72.5	50	14
30	32	30	20	10	48.0	45.0	30	12	64	60	40	14	80.0	75.0	55	14
31	33	31	25	10	49.5	46.5	35	12	66	62	45	14	82.5	77.5	55	16
32	34	32	25	10	51.0	48.0	35	12	68	64	45	14	85.0	80.0	55	16
33	35	33	25	10	52.5	49.5	35	12	70	66	45	14	87.5	82.5	55	16
34	36	34	25	10	54.0	51.0	35	12	72	68	45	14	90.0	85.0	55	16
35	37	35	25	10	55.5	52.5	35	12	74	70	45	14	92.5	87.5	60	16
36	38	36	25	10	57.0	54.0	35	12	76	72	45	14	95.0	90.0	60	16
37	39	37	25	10	58.5	55.5	40	12	78	74	50	14	97.5	92.5	60	16
38	40	38	25	10	60.0	57.0	40	12	80	76	50	14	100.0	95.0	60	16
39	41	39	25	10	61.5	58.5	40	12	82	78	50	14	102.5	97.5	60	16
40	42	40	25	10	63.0	60.0	40	12	84	80	50	14	105.0	100.0	70	16
41	43	41	30	10	64.5	61.5	40	12	86	82	55	16	107.5	102.5	70	16
42	44	42	30	10	66.0	63.0	50	12	88	84	55	16	110.0	105.0	70	16
43	45	43	30	10	67.5	64.5	50	12	90	86	55	16	112.5	107.5	70	16
44	46	44	30	10	69.0	66.0	50	12	92	88	60	16	115.0	110.0	70	16



# SICHUAN MIGHTY MACHINERY CO.,LTD.

Exceptional quality comes from Professional Technology.

Z	Mod.1				Mod.1.5				Mod.2				Mod.2.5			
	de	dp	dm	D1	de	dp	dm	D1	de	dp	dm	D1	de	dp	dm	D1
45	47	45	30	10	70.5	67.5	50	12	94	90	60	16	117.5	112.5	70	16
46	48	46	30	10	72.0	69.0	50	14	96	92	60	16	120.0	115.0	70	20
47	49	47	30	10	73.5	70.5	50	14	98	94	70	16	122.5	117.5	80	20
48	50	48	30	10	75.0	72.0	50	14	100	96	70	16	125.0	120.0	80	20
49	51	49	30	10	76.5	73.5	50	14	102	98	70	16	127.5	122.5	80	20
50	52	50	30	12	78.0	75.0	50	14	104	100	70	16	130.0	125.0	80	20
51	53	51	40	12	79.5	76.5	60	14	106	102	70	16	132.5	127.5	80	20
52	54	52	40	12	81.0	78.0	60	14	108	104	70	16	135.0	130.0	90	20
53	55	53	40	12	82.5	79.5	60	14	110	106	70	16	137.5	132.5	90	20
54	56	54	40	12	84.0	81.0	60	14	112	108	70	16	140.0	135.0	90	20
55	57	55	40	12	85.5	82.5	60	14	114	110	70	16	142.5	137.5	90	20
56	58	56	40	12	87.0	84.0	60	16	116	112	70	16	145.0	140.0	100	20
57	59	57	40	12	88.5	85.5	60	16	118	114	70	16	147.5	142.5	100	20
58	60	58	40	12	90.0	87.0	60	16	120	116	70	16	150.0	145.0	100	20
59	61	59	40	12	91.5	88.5	60	16	122	118	70	16	152.5	147.5	100	20
60	62	60	40	12	93.0	90.0	60	16	124	120	70	16				
61	63	61	50	12	94.5	91.5	70	16	126	122	80	16	155.0	150.0	100	20
62	64	62	50	12	96.0	93.0	70	16	128	124	80	16				
63	65	63	50	12	97.5	94.5	70	16	130	126	80	16				
64	66	64	50	12	99.0	96.0	70	16	132	128	80	16	167.5	162.5		20
65	67	65	50	12	100.5	97.5	70	16	134	130	80	16				
66	68	66	50	12	102.0	99.0	70	16	136	132	80	16				
67	69	67	50	12	103.5	100.5	70	16	138	134	80	16				
68	70	68	50	12	105.0	102.0	70	16	140	136	80	16				
69	71	69		12	106.5	103.5		16	142	138		16				
70	72	70	50	12	108.0	105.0	70	16	144	140	80	16	180.0	175.0		20
72	74	72	50	12	111.0	108.0	70	16	148	144	80	16	185.0	180.0		20
75	77	75		12	115.5	112.5		16	154	150		20	192.5	187.5		20
76	78	76		12	117.0	114.0		16	156	152		20	195.0	190.0		20
80	82	80		12	123.0	120.0		16	164	160		20	205.0	200.0		25
85	87	85		12	130.5	127.5		16	174	170		20	217.5	212.5		25
90	92	90		12	138.0	135.0		16	184	180		20	230.0	225.0		25



# SICHUAN MIGHTY MACHINERY CO.,LTD.

Exceptional quality comes from Professional Technology.

Z	Mod.3				Mod.4				Mod.5				Mod.6			
	de	dp	dm	D1	de	dp	dm	D1	de	dp	dm	D1	de	dp	dm	D1
12	42	36	27	12	56.0	48.0	35	14	70.0	60.0	45	20				
13	45	39	30	12	60.0	52.0	40	14	75.0	65.0	50	20	84.0	72.0	54	20
14	48	42	33	12	64.0	56.0	45	14	80.0	70.0	55	20	90.0	78.0	60	20
15	51	45	35	12	68.0	60.0	45	14	85.0	75.0	60	20				
16	54	48	38	14	72.0	64.0	50	16	90.0	80.0	65	20	102.0	90.0	70	20
17	57	51	42	14	76.0	68.0	50	16	95.0	85.0	70	20	108.0	96.0	75	20
18	60	54	45	14	80.0	72.0	50	16	100.0	90.0	70	20				
19	63	57	45	14	84.0	76.0	60	16	105.0	95.0	70	20	120.0	108.0	80	20
20	66	60	45	14	88.0	80.0	60	16	110.0	100.0	80	20	132.0	120.0	90	20
21	69	63	45	16	92.0	84.0	70	16	115.0	105.0	80	20				
22	72	66	50	16	96.0	88.0	70	16	120.0	110.0	80	20				
23	75	69	50	16	100.0	92.0	75	20	125.0	115.0	90	20				
24	78	72	50	16	104.0	96.0	75	20	130.0	120.0	90	20	156.0	144.0	110	25
25	81	75	60	16	108.0	100.0	75	20	135.0	125.0	90	20	162.0	150.0	110	25
26	84	78	60	16	112.0	104.0	75	20	140.0	130.0	100	20				
27	87	81	60	16	116.0	108.0	75	20	145.0	135.0	100	20				
28	90	84	60	16	120.0	112.0	75	20	150.0	140.0	100	25	180.0	168.0		25
29	93	87	60	16	124.0	116.0	75	20	155.0	145.0	110	25				
30	96	90	60	16	128.0	120.0	75	20	160.0	150.0	110	25	192.0	180.0		25
31	99	93	60	16	132.0	124.0	80	20	170.0	160.0	110	25	204.0	192.0		25
32	102	96	70	16	136.0	128.0	80	20								
33	105	99	70	16	140.0	132.0	80	20								
34	108	102	70	16	144.0	136.0	80	20	185.0	175.0		25	222.0	210.0		25
35	111	105	70	16	148.0	140.0	80	20								
36	114	108	70	20	152.0	144.0		25								
37	117	111	70	20	160.0	152.0	80	25	200.0	190.0		25	240.0	220.0		25
38	120	114	80	20												
39	123	117	80	20												
40	126	120	80	20	168.0	160.0		25	210.0	200.0		25	252.0	240.0		25
41	129	138	90	20												
42	132	126	80	20												
43	135	129	80	20												
44	138	132	90	20												
45	141	135	90	20												
46	144	138	90	20	188.0	180.0		25	235.0	225.0		25				
47	147	141	100	20												
48	150	144		20	200.0	192.0		25	250.0	240.0		25				
50	156	150	100	20	208.0	200.0		25	260.0	250.0		30				
52	162	156		20	216.0	208.0		25	270.0	260.0		30				
55	171	165		20	228.0	220.0		25	285.0	275.0		30				
57	177	171		20	236.0	228.0		25	295.0	285.0		30				
60	186	180		20	248.0	240.0		25	310.0	300.0		30				
65	201	195		20	268.0	260.0		25	335.0	325.0		30				
70	216	210		25	288.0	280.0		25	360.0	350.0		30				
72	222	216		25												
75	231	225		25	308.0	300.0		25	385.0	375.0		30				
76	234	228		25	312.0	304.0		30	390.0	380.0		30				
80	246	240		25	328.0	320.0		30	410.0	400.0		30				
85	261	255		25	348.0	340.0		30	435.0	425.0		30				
90	276	270		25	368.0	360.0		30	460.0	450.0		30				
95	291	285		25	388.0	380.0		30	485.0	475.0		30				