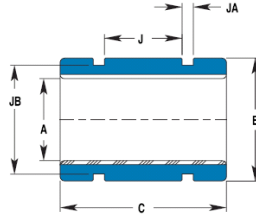


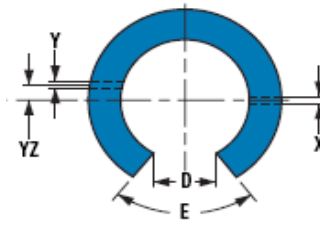
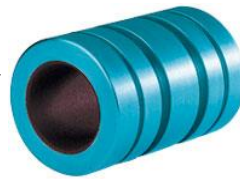
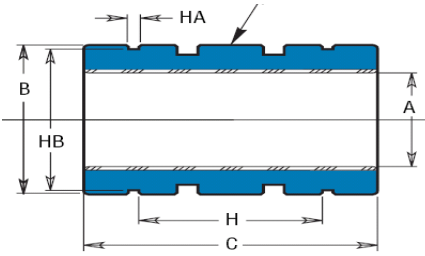


KH SERİSİ ÖLÇÜLERİNDE METRİK SERİ



PARÇA NO	A	B	C	J	JA	JB	MAKSİMUM YÜK KG.	FİYAT	
FMT 6	KH 0622	6	12	22			126	33,6 €	* Pürüzsüz ve sessiz hareket
FMT 8	KH 0824	8	15	24	10	2,00	183	33,6 €	ile vibrasyon önleyici.
FMT 10	KH 1026	10	17	26	12	2,00	248	37,3 €	* Frelon GOLD ile standart bilyalı
FMT 12	KH 1228	12	19	28	14	2,00	321	38,9 €	burçlardan 20 kat daha fazla
FMT 14	KH 1428	14	21	28	14	2,00	374	43,3 €	yük kapasitesi.
FMT 16	KH 1630	16	24	30	14	2,00	458	43,3 €	* Şok yükler parçalara zarar
FMT 20	KH 2030	20	28	30	14	2,00	572	44,1 €	vermeden absorbe edilebilme.
FMT 25	KH 2540	25	35	40	22	3,20	953	81,6 €	* Daha düşük aşınma.
FMT 30	KH 3050	30	40	50	30	3,20	1430	137,1 €	* Farklı ısı değerlerinde çalışma.
FMT 40	KH 4060	40	52	60	40	4,10	2288	157,3 €	(-240 C / +260 C)
FMT 50	KH 5070	50	62	70	50	4,10	3337	275,0 €	* Yağ keçesi gerektirmez.

LBE SERİSİ ÖLÇÜLERİNDE METRİK SERİ



PARÇA NO	A	B	C	H	HA	HB	D	E	Max. Statik Yük (Kg.)	KAPALI TİP FİYAT/AD.	AÇIK TİP FİYAT/AD.	
KAPALI	AÇIK	mm										
FM 5	FMN 5	5	12	22	12	1,14	11,5	3,2	60	105	-	-
FM 8	FMN 8	8	16	25	14	1,14	15,2	5,1	60	191	37,3 €	-
FM 10	FMN 10	10	19	29	19,4	1,32	18,0	6,4	60	277	41,4 €	-
FM 12	FMN 12	12	22	32	20	1,32	21,0	7,6	78	366	43,2 €	59,9 €
FM 16	FMN 16	16	26	36	22	1,32	24,9	10,4	78	549	48,1 €	64,8 €
FM 20	FMN 20	20	32	45	28	1,63	30,3	10,8	60	858	49,1 €	67,2 €
FM 25	FMN 25	25	40	58	40	1,90	37,5	13,2	60	1383	90,7 €	114,6 €
FM 30	FMN 30	30	47	68	48	1,90	44,5	14,2	72	1945	152,5 €	190,6 €
FM 40	FMN 40	40	62	80	56	2,20	59,0	19,5	72	3051	174,8 €	217,5 €
FM 50	FMN 50	50	75	100	72	2,70	72,0	24	72	4767	305,5 €	380,6 €
FM 60	FMN 60	60	90	125	95	3,20	86,4	29,6	72	7151	516,3 €	-
FM 80	FMN 80	80	120	165	125	4,17	116,1	39	72	12585	826,1 €	-
FJ 16	FJN 16	16	28	37	23,2	1,65	26,6	11	80	622	-	90,4 €
FJ 20	FJN 20	20	32	42	27,2	1,65	30,3	11	60	858	-	67,2 €
FJ 25	FJN 25	25	40	59	37,2	1,85	38,0	12	50	1383	-	114,6 €
FJ 30	FJN 30	30	45	64	40,7	1,85	42,5	15	50	1945	-	190,6 €
FJ 40	FJN 40	40	60	80	56,1	2,20	57,0	20	50	3051	-	220,0 €

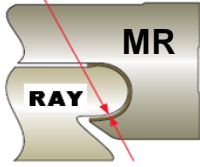
FM=LME FMN=LME..OP FJ=LM FJN=LM..OP



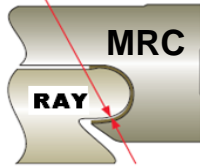
KENDİNDEN YAĞLAMALI MİNYATÜR KIZAK VE ARABALAR



Hassasiyet Değeri
.025 - .051 mm
Seramik Kaplama

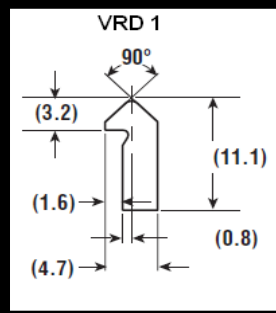
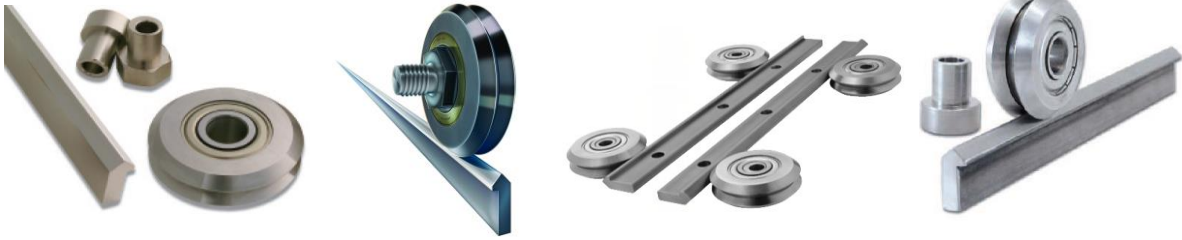


Hassasiyet Değeri
.064 - .089 mm
Seramik Kaplama

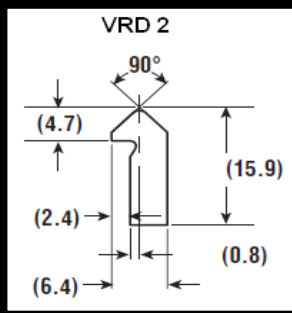


PARÇA NO	Araba FİYAT/AD.	RAY FİYAT/MT.
MR 7 C	83,0 €	283,8 €
MR 9 C	86,3 €	283,8 €
MR 12 C	89,2 €	283,8 €
MR 15 C	93,7 €	283,8 €
MR 20 C	117,1 €	312,1 €

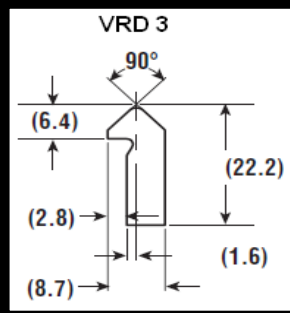
V-GUIDE SİSTEM RM RULMANLAR İÇİN RAYLAR



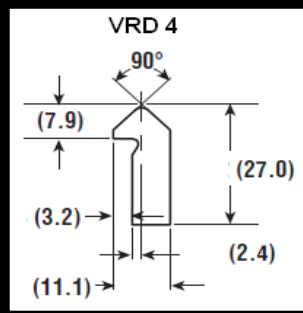
110,4 € / MT.



144,9 € / MT.

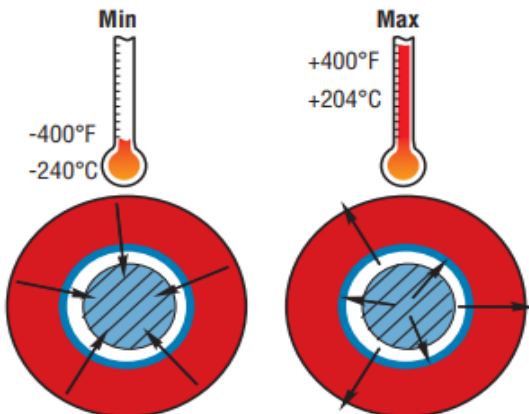


222,5 € / MT.



319,0 € / MT.

TEMPERATURE EXTREMES



MAXIMUM ROTARY SPEEDS

